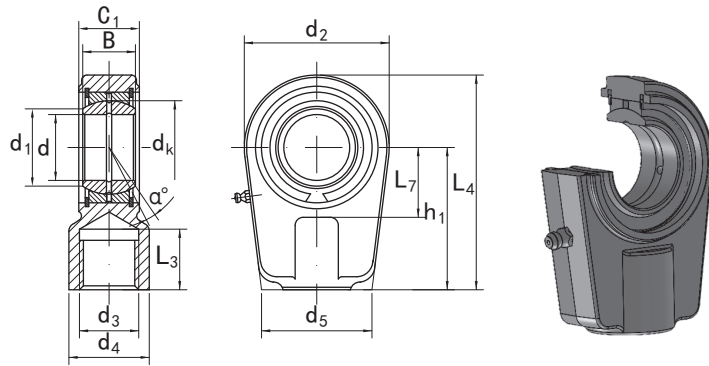


■ 用于液压部件的杆端关节轴承 **GIHR..DO** 系列

KGBAL®

ROD ENDS FOR HYDRAULIC COMPONENTS GIHR..DO SERIES

需维护、内螺纹型 Requiring maintenance, with female thread



壳体Housing	内圈Inner ring	外圈Outer ring
碳钢Carbon steel	轴承钢Bearing steel	轴承钢Bearing steel
	热处理Heat treated:HRC58-64	热处理Heat treated:HRC54-60
	磷化Phosphating	磷化Phosphating
摩擦副Sliding contact surfaces:		钢/钢 Steel/Steel

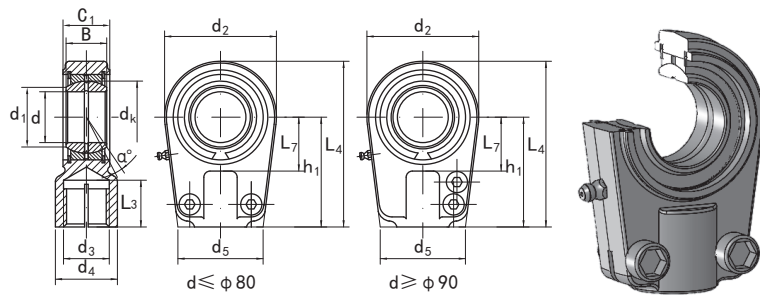
型号 Part No.		尺寸 Dimensions														mm		载荷Load ratings kN		重量 Weight kg
右螺纹 Right hand	左螺纹 Left hand	d	d ₃ 6H	d ₄	L ₃ min	B	C ₁	d ₂	L ₇ min	h ₁	L ₄	d ₅	d ₁	d _k	α ≈	动载荷 Dynamic	静载荷 Static			
GIHR 20 DO	GIHL 20 DO	20	M16×1.5	25	17	16	19	56	25	50	80	46	24.2	29	9	30	72	0.43		
GIHR 25 DO	GIHL 25 DO	25	M16×1.5	25	17	20	23	56	28	50	80	46	29.3	35.5	7	48	72	0.48		
GIHR 30 DO	GIHL 30 DO	30	M22×1.5	32	23	22	28	64	30	60	94	50	34.2	40.7	6	62	106	0.74		
GIHR 35 DO	GIHL 35 DO	35	M28×1.5	40	29	25	30	78	38	70	112	66	39.8	47	6	80	153	1.2		
GIHR 40 DO	GIHL 40 DO	40	M35×1.5	49	36	28	35	94	45	85	135	76	45	53	7	100	250	2		
GIHR 50 DO	GIHL 50 DO	50	M45×1.5	61	46	35	40	116	55	105	168	90	55.9	66	6	156	365	3.8		
GIHR 60 DO	GIHL 60 DO	60	M58×1.5	75	59	44	50	130	65	130	200	120	66.8	80	6	245	400	5.4		
GIHR 70 DO	GIHL 70 DO	70	M65×1.5	86	66	49	55	154	75	150	232	130	77.9	92	6	315	540	8.5		
GIHR 80 DO	GIHL 80 DO	80	M80×2.0	105	81	55	60	176	80	170	265	160	89.4	105	6	400	670	12		
GIHR 90 DO	GIHL 90 DO	90	M100×2.0	124	101	60	65	206	90	210	323	180	98.1	115	5	490	980	21.5		
GIHR 100 DO	GIHL 100 DO	100	M110×2.0	138	111	70	70	231	105	235	360	200	109.5	130	7	610	1120	27.5		
GIHR 110 DO	GIHL 110 DO	110	M120×3.0	152	125	70	80	266	115	265	407.5	220	121.2	140	6	655	1700	40.5		
GIHR 120 DO	GIHL 120 DO	120	M130×3.0	172	135	85	90	340	140	310	490	257	135.5	160	6	950	2900	76		

■ 用于液压部件的杆端关节轴承 **GIHR-K..DO** 系列

KGBAL®

ROD ENDS FOR HYDRAULIC COMPONENTS GIHR-K..DO SERIES

需维护、内螺纹、带锁紧螺母型 Requiring maintenance, with female thread and locking nuts



壳体Housing	内圈Inner ring	外圈Outer ring
碳钢Carbon steel	轴承钢Bearing steel 热处理Heat treated:HRC58-64 磷化Phosphating	轴承钢Bearing steel 热处理Heat treated:HRC54-60 磷化Phosphating
摩擦副Sliding contact surfaces:		钢/钢 Steel/Steel

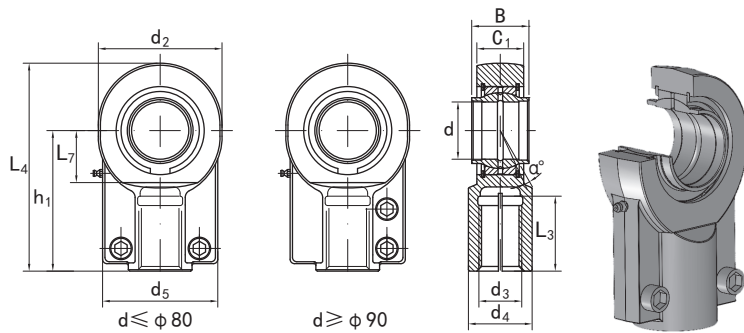
型号 Part No.		尺寸 Dimensions														mm		载荷Load ratings kN		重量 Weight kg
右螺纹 Right hand	左螺纹 Left hand	d	d ₃ 6H	d ₄	L ₃ min	B	C ₁	d ₂	L ₇ min	h ₁	L ₄	d ₅	d ₁	d _k	α ≈	动载荷 Dynamic	静载荷 Static			
GIHR-K 20 DO	GIHL-K 20 DO	20	M16×1.5	25	17	16	19	56	25	50	80	46	24.2	29	9	30	72	0.43		
GIHR-K 25 DO	GIHL-K 25 DO	25	M16×1.5	25	17	20	23	56	28	50	80	46	29.3	35.5	7	48	72	0.48		
GIHR-K 30 DO	GIHL-K 30 DO	30	M22×1.5	32	23	22	28	64	30	60	94	50	34.2	40.7	6	62	106	0.74		
GIHR-K 35 DO	GIHL-K 35 DO	35	M28×1.5	40	29	25	30	78	38	70	112	66	39.8	47	6	80	153	1.2		
GIHR-K 40 DO	GIHL-K 40 DO	40	M35×1.5	49	36	28	35	94	45	85	135	76	45	53	7	100	250	2		
GIHR-K 50 DO	GIHL-K 50 DO	50	M45×1.5	61	46	35	40	116	55	105	168	90	55.9	66	6	156	365	3.8		
GIHR-K 60 DO	GIHL-K 60 DO	60	M58×1.5	75	59	44	50	130	65	130	200	120	66.8	80	6	245	400	5.4		
GIHR-K 70 DO	GIHL-K 70 DO	70	M65×1.5	86	66	49	55	154	75	150	232	130	77.9	92	6	315	540	8.5		
GIHR-K 80 DO	GIHL-K 80 DO	80	M80×2.0	105	81	55	60	176	80	170	265	160	89.4	105	6	400	670	12		
GIHR-K 90 DO	GIHL-K 90 DO	90	M100×2.0	124	101	60	65	206	90	210	323	180	98.1	115	5	490	980	21.5		
GIHR-K 100 DO	GIHL-K 100 DO	100	M110×2.0	138	111	70	70	231	105	235	360	200	109.5	130	7	610	1120	27.5		
GIHR-K 110 DO	GIHL-K 110 DO	110	M120×3.0	152	125	70	80	266	115	265	407.5	220	121.2	140	6	655	1700	40.5		
GIHR-K 120 DO	GIHL-K 120 DO	120	M130×3.0	172	135	85	90	340	140	310	490	257	135.5	160	6	950	2900	76		

■ 用于液压部件的杆端关节轴承 **GIHN-K..LO** 系列

KGBAL®

ROD ENDS FOR HYDRAULIC COMPONENTS GIHN-K..LO SERIES

需维护、内螺纹、带锁紧螺母型 Requiring maintenance, with female thread and locking nuts



壳体Housing	内圈Inner ring	外圈Outer ring
碳钢Carbon steel	轴承钢Bearing steel	轴承钢Bearing steel
	热处理Heat treated:HRC58-64	热处理Heat treated:HRC54-60
	磷化Phosphating	磷化Phosphating
摩擦副Sliding contact surfaces:		钢/钢 Steel/Steel

型号 Part No.		尺寸 Dimensions											mm		载荷Load ratings kN		重量 Weight kg
右螺纹 Right hand	左螺纹 Left hand	d	d ₃ 6H	d ₄	L ₃ min	B	C ₁	d ₂	L ₇ min	h ₁	L ₄	d ₅	α ≈	动载荷 Dynamic	静载荷 Static		
GIHN-K 12 LO*	GIHN-KL 12 LO*	12	M12×1.25	16.5	17	12	11	32	14	38	54	32	4	10.8	24.5	0.1	
GIHN-K 16 LO	GIHN-KL 16 LO	16	M14×1.5	21	19	16	14	40	18	44	64	40	4	17.6	36.5	0.2	
GIHN-K 20 LO	GIHN-KL 20 LO	20	M16×1.5	25	23	20	17	47	22	52	77	47	4	30	48	0.4	
GIHN-K 25 LO	GIHN-KL 25 LO	25	M20×1.5	30	29	25	22	58	27	65	96	54	4	48	78	0.66	
GIHN-K 32 LO	GIHN-KL 32 LO	32	M27×2.0	38	37	32	28	71	32	80	118.5	66	4	67	114	1.2	
GIHN-K 40 LO	GIHN-KL 40 LO	40	M33×2.0	47	46	40	33	90	41	97	146	80	4	100	204	2.1	
GIHN-K 50 LO	GIHN-KL 50 LO	50	M42×2.0	58	57	50	41	109	50	120	179.5	96	4	156	310	4.4	
GIHN-K 63 LO	GIHN-KL 63 LO	63	M48×2.0	70	64	63	53	136	62	140	213	114	4	255	430	7.6	
GIHN-K 70 LO	GIHN-KL 70 LO	70	M56×2.0	80	76	70	57	155	70	160	245	135	4	315	540	9.5	
GIHN-K 80 LO	GIHN-KL 80 LO	80	M64×3.0	90	86	80	67	170	78	180	270.5	148	4	400	695	14.5	
GIHN-K 90 LO	GIHN-KL 90 LO	90	M72×3.0	100	91	90	72	185	85	195	296	160	4	490	750	17	
GIHN-K 100 LO	GIHN-KL 100 LO	100	M80×3.0	110	96	100	85	210	98	210	322	178	4	610	1060	28	
GIHN-K 110 LO	GIHN-KL 110 LO	110	M90×3.0	125	106	110	88	235	105	235	364	190	4	655	1200	32	
GIHN-K 125 LO	GIHN-KL 125 LO	125	M100×3.0	135	113	125	103	265	120	260	405	200	4	950	1430	43	
GIHN-K 160 LO	GIHN-KL 160 LO	160	M125×4.0	165	126	160	130	326	150	310	488	250	4	1370	2200	82.5	

——带"*"的型号均不能润滑。

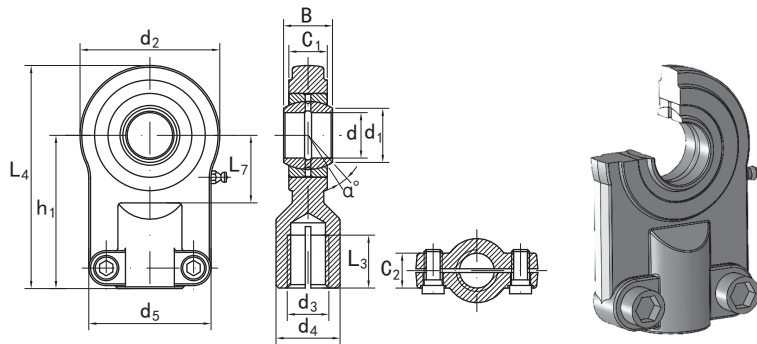
——Relubrication not available for sizes marked "**".

■ 用于液压部件的杆端关节轴承 **GIHO-K..DO** 系列

KGBAL®

ROD ENDS FOR HYDRAULIC COMPONENTS GIHO-K..DO SERIES

需维护、内螺纹、带锁紧螺母型 Requiring maintenance, with female thread and locking nuts



壳体Housing	内圈Inner ring	外圈Outer ring
碳钢Carbon steel	轴承钢Bearing steel	轴承钢Bearing steel
	热处理Heat treated:HRC58-64	热处理Heat treated:HRC54-60
	磷化Phosphating	磷化Phosphating
摩擦副Sliding contact surfaces:		钢/钢 Steel/Steel

型号 Part No.		尺寸 Dimensions														mm		载荷Load ratings kN		重量 Weight kg
右螺纹 Right hand	左螺纹 Left hand	d	d ₃ 6H	d ₄	L ₃ min	B	C ₁	d ₂	L ₇ min	h ₁	L ₄	d ₅	d ₁	C ₂	α ≈	动载荷 Dynamic	静载荷 Static			
GIHO-K 12 DO*	GIHO-KL 12 DO*	12	M10×1.25	17	15	10	8	35	16	42	59.5	35	15	13	11	10.8	17	0.12		
GIHO-K 16 DO	GIHO-KL 16 DO	16	M12×1.25	21	17	14	11	45	20	48	70.5	45	20.7	13	10	21.1	28.5	0.22		
GIHO-K 20 DO	GIHO-KL 20 DO	20	M14×1.5	25	19	16	13	55	25	58	85.5	55	24.2	17	9	30	42.5	0.43		
GIHO-K 25 DO	GIHO-KL 25 DO	25	M16×1.5	30	23	20	17	65	30	68	100.5	62	29.3	17	7	48	67	0.67		
GIHO-K 30 DO	GIHO-KL 30 DO	30	M20×1.5	36	29	22	19	80	35	85	125	77	34.2	19	6	62	108	1.25		
GIHO-K 40 DO	GIHO-KL 40 DO	40	M27×2.0	45	37	28	23	100	45	105	155	90	45	23	7	100	156	2.16		
GIHO-K 50 DO	GIHO-KL 50 DO	50	M33×2.0	55	46	35	30	120	58	130	190	105	55.9	30	6	156	245	3.9		
GIHO-K 60 DO	GIHO-KL 60 DO	60	M42×2.0	68	57	44	38	160	68	150	230	134	66.8	38	6	245	380	7.15		
GIHO-K 80 DO	GIHO-KL 80 DO	80	M48×2.0	90	64	55	47	205	82	185	287.5	156	89.4	47	6	400	585	15		
GIHO-K 100 DO	GIHO-KL 100 DO	100	M64×3.0	110	86	70	55	240	116	240	360	190	109.5	55	7	610	865	27.3		

——带"*"的型号均不能润滑。

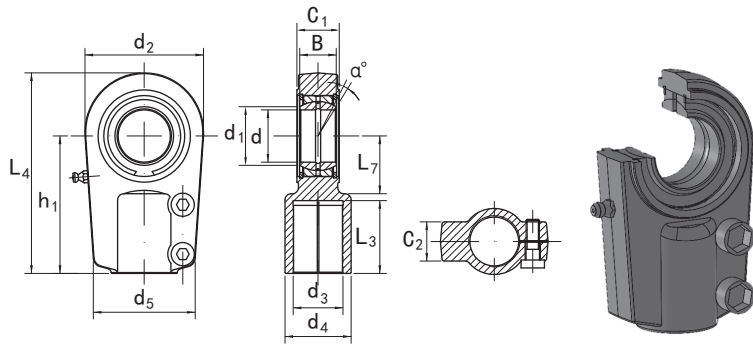
——Relubrication not available for sizes marked "**".

■ 用于液压部件的杆端关节轴承 **GK..SK** 系列

KGBAL®

ROD ENDS FOR HYDRAULIC COMPONENTS GK..SK SERIES

需维护、内螺纹、带锁紧螺母型 Requiring maintenance, with female thread and locking nuts



壳体Housing	内圈Inner ring	外圈Outer ring
碳钢Carbon steel	轴承钢Bearing steel 热处理Heat treated:HRC58-64 磷化Phosphating	轴承钢Bearing steel 热处理Heat treated:HRC54-60 磷化Phosphating
摩擦副Sliding contact surfaces:		钢/钢 Steel/Steel

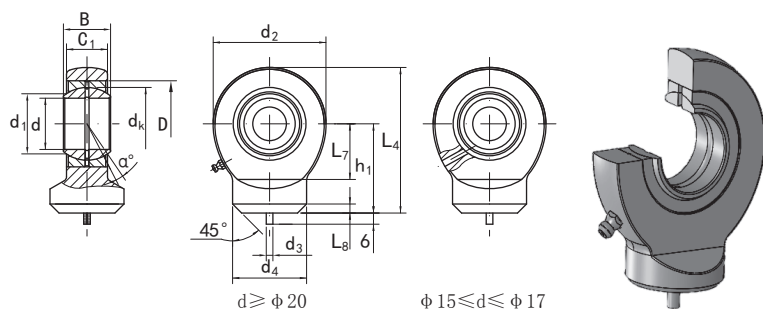
型号 Part No.		尺寸 Dimensions														mm		载荷Load ratings kN		重量 Weight kg
右螺纹 Right hand	左螺纹 Left hand	d	C ₁	B	d ₂	d ₁	h ₁	d ₅	C ₂	L ₄	L ₇ min	d ₄	L ₃ min	d ₃ 6H	α ≈	动载荷 Dynamic	静载荷 Static			
GK 25 SK	GKL 25 SK	25	23	20	56	29.3	65	48	21	95	25	28	30	M18×2.0	8	48	76	0.7		
GK 30 SK	GKL 30 SK	30	28	22	64	34.2	75	56	26	109	30	34	35	M24×2.0	7	62	112	1		
GK 35 SK	GKL 35 SK	35	30	25	78	39.7	90	70	28	132	40	44	45	M30×2.0	7	80	180	1.3		
GK 40 SK	GKL 40 SK	40	35	28	94	45	105	78	33	155	45	55	55	M39×3.0	7	100	295	2.4		
GK 50 SK	GKL 50 SK	50	40	35	116	56	135	88	36	198	55	70	75	M50×3.0	7	156	445	4.1		
GK 60 SK	GKL 60 SK	60	50	44	130	66.8	170	118	46	240	65	87	95	M64×3.0	7	245	530	6.5		
GK 70 SK	GKL 70 SK	70	55	49	154	77.8	195	138	51	278	75	105	110	M80×3.0	6	315	720	9.5		
GK 80 SK	GKL 80 SK	80	60	55	176	89.4	210	168	55	305	80	125	120	M90×3.0	6	400	890	16		
GK 90 SK	GKL 90 SK	90	65	60	206	98.1	250	180	60	363	90	150	140	M100×3.0	5	490	1300	28		
GK 100 SK	GKL 100 SK	100	70	70	230	109.5	275	188	65	400	105	170	150	M110×4.0	7	610	1490	34		
GK 110 SK	GKL 110 SK	110	80	70	264	121.2	300	210	74	442	115	180	160	M120×4.0	6	650	2050	44		
GK 120 SK	GKL 120 SK	120	90	85	340	135.5	360	240	84	540	140	210	190	M150×4.0	6	950	2970	75		
GK 140 SK	GKL 140 SK	140	110	90	380	155.8	420	256	105	620	185	230	210	M160×4.0	7	1080	3350	160		
GK 160 SK	GKL 160 SK	160	110	105	480	170.2	460	290	105	710	200	260	240	M180×4.0	8	1370	4300	185		

■ 用于液压部件的杆端关节轴承 **GK..DO** 系列

KGBAL®

ROD ENDS FOR HYDRAULIC COMPONENTS GK..DO SERIES

需维护、焊接型 **Requiring maintenance, for welding**



壳体Housing	内圈Inner ring	外圈Outer ring
合金钢Alloy steel	轴承钢Bearing steel	轴承钢Bearing steel
	热处理Heat treated:HRC58-64	热处理Heat treated:HRC54-60
	磷化Phosphating	磷化Phosphating
摩擦副Sliding contact surfaces:		钢/钢 Steel/Steel

型号 Part No.	尺寸 Dimensions														载荷Load ratings kN		重量 Weight kg
	d	d ₃	d ₄	B	C ₁	d ₂	L ₇ min	L ₈	h ₁	L ₄	dk	d ₁	D	α ≈	动载荷 Dynamic	静载荷 Static	
GK 10 DO*	10	3	15	9	7	29	15	1.5	24	38.5	16	13.2	19	12	8.15	15.6	0.041
GK 12 DO*	12	3	17.5	10	8	34	18	1.5	27	44	18	15	22	11	10.8	21.6	0.066
GK 15 DO	15	4	21	12	10	40	20	2	31	51	22	18.4	26	8	17	32	0.12
GK 17 DO	17	4	24	14	11	46	23	2	35	58	25	20.7	30	10	21.2	40	0.19
GK 20 DO	20	4	27.5	16	13	53	27.5	2	38	64.5	29	24.2	35	9	30	54	0.23
GK 25 DO	25	4	33.5	20	17	64	33	3	45	77	35.5	29.3	42	7	48	72	0.43
GK 30 DO	30	4	40	22	19	73	37.5	3	51	87.5	40.7	34.2	47	6	62	95	0.64
GK 35 DO	35	4	47	25	21	82	43	3	61	102	47	39.8	55	6	80	125	0.96
GK 40 DO	40	4	52	28	23	92	48	4	69	115	53	45	62	7	100	156	1.3
GK 45 DO	45	6	58	32	27	102	52	4	77	128	60	50.8	68	7	127	208	1.8
GK 50 DO	50	6	62	35	30	112	59	4	88	144	66	55.9	75	6	156	250	2.5
GK 60 DO	60	6	70	44	38	135	72.5	4	100	167.5	80	66.8	90	6	245	390	3.9
GK 70 DO	70	6	80	49	42	160	86	5	115	195	92	77.9	105	6	315	510	6.6
GK 80 DO	80	6	95	55	47	180	98	5	141	231	105	89.4	120	6	400	620	8.7

——d < φ 17, 均不装油杯。

——也可提供2RS型结构, 例如: GK 50 DO 2RS

——带“*”的型号均不能润滑。

——Grease nipple not available for d < φ 17.

——Sealed version also available, e.g.GK 50 DO 2RS.

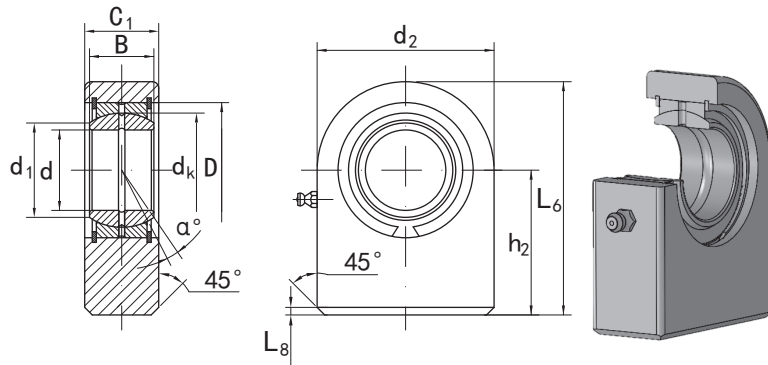
——Relubrication not available for sizes marked “*”.

■ 用于液压部件的杆端关节轴承 **GF.DO** 系列

KGBAL®

ROD ENDS FOR HYDRAULIC COMPONENTS GF.DO SERIES

需维护、焊接型 Requiring maintenance, for welding



壳体Housing	内圈Inner ring	外圈Outer ring
合金钢Alloy steel	轴承钢Bearing steel 热处理Heat treated:HRC58-64 磷化Phosphating	轴承钢Bearing steel 热处理Heat treated:HRC54-60 磷化Phosphating
摩擦副Sliding contact surfaces:		钢/钢 Steel/Steel

型号 Part No.	尺寸 Dimensions											载荷Load ratings kN		重量 Weight kg
	d	B	C ₁	d ₂	L ₆	h ₂	d _k	d ₁	D	L ₈	α ≈	动载荷 Dynamic	静载荷 Static	
GF 15 DO	15	12	16	45	53.5	31	22	18.4	26	2	8	17	53	0.22
GF 16 DO	16	14	17.5	48	59	35	25	20.7	30	2	10	21.2	59	0.29
GF 17 DO	17	14	17.5	48	59	35	25	20.7	30	2	10	21.2	65	0.29
GF 20 DO	20	16	19	50	63	38	29	24.2	35	2	9	30	67	0.35
GF 25 DO	25	20	23	55	72.5	45	35.5	29.3	42	2	7	48	69.5	0.53
GF 30 DO	30	22	28	65	83.5	51	40.7	34.2	47	2	6	62	118	0.87
GF 35 DO	35	25	30	83	102.5	61	47	39.8	55	2	6	80	196	1.5
GF 40 DO	40	28	35	100	119	69	53	45	62	3	7	100	300	2.4
GF 45 DO	45	32	40	110	132	77	60	50.8	68	3	7	127	380	3.4
GF 50 DO	50	35	40	123	149.5	88	66	55.9	75	3	6	156	440	4.4
GF 60 DO	60	44	50	140	170	100	80	66.8	90	4	6	245	570	7.1
GF 70 DO	70	49	55	164	197	115	92	77.9	105	4	6	315	695	10.5
GF 80 DO	80	55	60	180	231	141	105	89.4	120	4	6	400	780	15
GF 90 DO	90	60	65	226	263	150	115	98.1	130	4	5	490	1340	23.5
GF 100 DO	100	70	70	250	295	170	130	109.5	150	4	7	610	1500	31.5
GF 110 DO	110	70	80	295	332.5	185	140	121.2	160	4	6	655	2160	48.5
GF 120 DO	120	85	90	360	390	210	160	135.5	180	4	6	950	3250	79

——也可提供2RS型结构，例如：GF 70 DO 2RS。

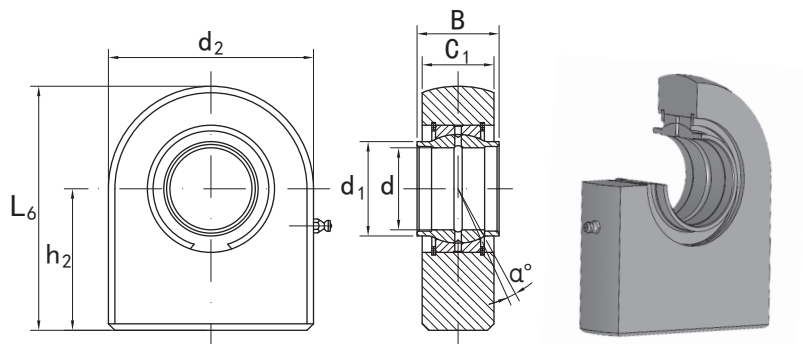
——Sealed version also available, e.g. GF 70 DO 2RS.

■ 用于液压部件的杆端关节轴承 **GF.LO** 系列

KGBAL®

ROD ENDS FOR HYDRAULIC COMPONENTS GF.LO SERIES

需维护、焊接型 Requiring maintenance, for welding



壳体Housing	内圈Inner ring	外圈Outer ring
合金钢Alloy steel	轴承钢Bearing steel	轴承钢Bearing steel
	热处理Heat treated:HRC58-64	热处理Heat treated:HRC54-60
	磷化Phosphating	磷化Phosphating
摩擦副Sliding contact surfaces:		钢/钢 Steel/Steel

型号 Part No.	尺寸 Dimensions								载荷Load ratings		重量 Weight kg
	mm								kN		
	d	B	C ₁	d ₂	L ₆	h ₂	d ₁	α ≈	动载荷 Dynamic	静载荷 Static	
GF 16 LO	16	16	17.5	48	59	35	20	4	17	40	0.3
GF 20 LO	20	20	19	50	63	38	25	4	30	74	0.36
GF 25 LO	25	25	23	55	72.5	45	30.5	4	48	95	0.54
GF 32 LO	32	32	27	70	100	65	38	4	62.5	168	1.12
GF 40 LO	40	40	35	100	119	69	46	4	100	268	2.5
GF 50 LO	50	50	40	123	149.5	88	57	4	156	362	4.6
GF 63 LO	63	63	50	145	179.5	107	71.5	4	248	570	9.3
GF 70 LO	70	70	55	164	197	115	79	4	315	800	11.25
GF 80 LO	80	80	60	180	231	141	91	4	400	874	15.75
GF 90 LO	90	90	65	226	263	150	99	4	490	1045	24
GF 100 LO	100	100	70	250	295	170	113	4	610	1330	33.95
GF 110 LO	110	110	80	295	332.5	185	124	4	655	1490	49

——也可提供2RS型结构，例如：GF 70 HO 2RS。

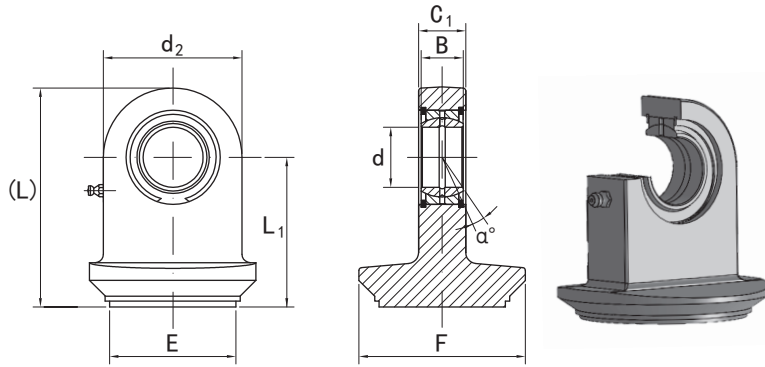
——Sealed version also available, e.g. GF 70 HO 2RS.

■ 用于液压部件的杆端关节轴承 **TS..NF..** 系列

KGBAL®

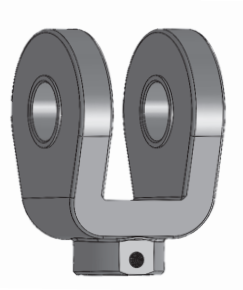
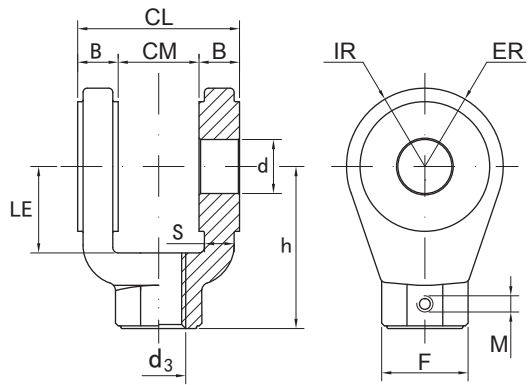
ROD ENDS FOR HYDRAULIC COMPONENTS TS..NF.. SERIES

需维护、焊接型 Requiring maintenance, for welding



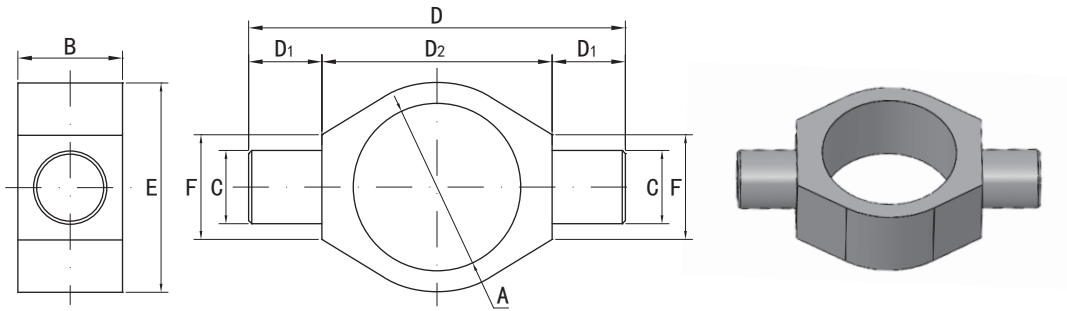
壳体Housing	内圈Inner ring	外圈Outer ring
合金钢Alloy steel	轴承钢Bearing steel 热处理Heat treated:HRC58-64 磷化Phosphating	轴承钢Bearing steel 热处理Heat treated:HRC54-60 磷化Phosphating
摩擦副Sliding contact surfaces:		钢/钢 Steel/Steel

型号 Part No.	尺寸 Dimensions									向心型号 Bearings
	d	B	C ₁	L ₁	d ₂	(L)	E	F	α	
TS 20 NF 35	20	16	19	48.5	50	73.5	35	45	9	GE 20 ES
TS 20 NF 40	20	16	19	48.5	50	73.5	40	50	9	GE 20 ES
TS 20 NF 45	20	16	19	48.5	50	73.5	45	55	9	GE 20 ES
TS 25 NF 50	25	20	23	57.5	55	85	50	60	7	GE 25 ES
TS 25 NF 55	25	20	23	57.5	55	85	55	65	7	GE 25 ES
TS 30 NF 60	30	22	28	63.5	65	96	60	70	6	GE 30 ES
TS 30 NF 63	30	22	28	63.5	65	96	63	73	6	GE 30 ES
TS 30 NF 65	30	22	28	63.5	65	96	65	75	6	GE 30 ES
TS 35 NF 70	35	25	30	73.5	83	115	70	80	6	GE 35 ES
TS 35 NF 75	35	25	30	73.5	83	115	75	90	6	GE 35 ES
TS 35 NF 80	35	25	30	73.5	83	115	80	95	6	GE 35 ES
TS 35 NF 80-1	35	25	30	73.5	83	115	80	90	6	GE 35 ES
TS 40 NF 80	40	28	35	84.5	100	134.5	80	95	7	GE 40 ES
TS 40 NF 85	40	28	35	84.5	100	134.5	85	100	7	GE 40 ES
TS 40 NF 90	40	28	35	84.5	100	134.5	90	105	7	GE 40 ES
TS 40 NF 100	40	28	35	84.5	100	134.5	100	115	7	GE 40 ES
TS 50 NF 110	50	35	40	106.5	123	168	110	130	6	GE 50 ES
TS 50 NF 120	50	35	40	106.5	123	168	120	140	6	GE 50 ES
TS 50 NF 125	50	35	40	106.5	123	168	125	145	6	GE 50 ES



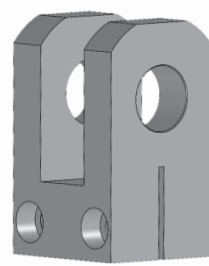
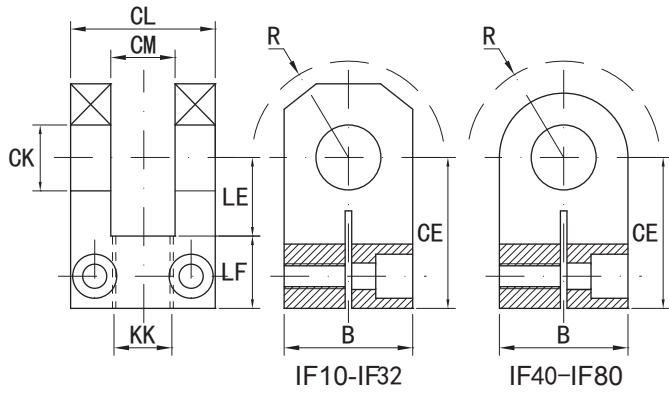
壳体Housing
合金钢Alloy steel

型号 Part No.	尺寸 Dimensions												重量 Weight kg
	CM	d	h	CL	F	d ₃ øH	LE	ER	B	IR	S	M øH	
GLP 10	12	10	32	24	19	M10×1.25	13	12	6	10	4	M5	0.1
GLP 12	16	12	36	32	21	M12×1.25	19	17	8	14	5.5	M5	0.18
GLP 14	20	14	38	40	21	M14×1.5	19	17	10	14	7.5	M5	0.23
GLP 16	30	20	54	60	32	M16×1.5	32	29	15	24	11	M6	0.9
GLP 20	30	20	60	60	32	M20×1.5	32	29	15	24	11	M6	0.91
GLP 27	40	28	75	80	40	M27×2.0	39	34	20	29	17	M8	1.92
GLP 33	50	36	99	100	55	M33×2.0	54	50	25	44	22	M8	4.92
GLP 42	60	45	113	120	56	M42×2.0	57	53	30	49	27	M8	6.53
GLP 48	70	56	126	140	75	M48×2.0	63	59	35	38	31	M12	10.11
GLP 64	80	70	168	160	95	M64×3.0	83	78	40	45	37	M12	19.2
GLP 80	80	70	168	160	95	M80×3.0	83	78	40	45	37	M12	18.42



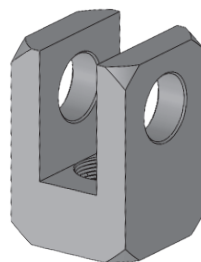
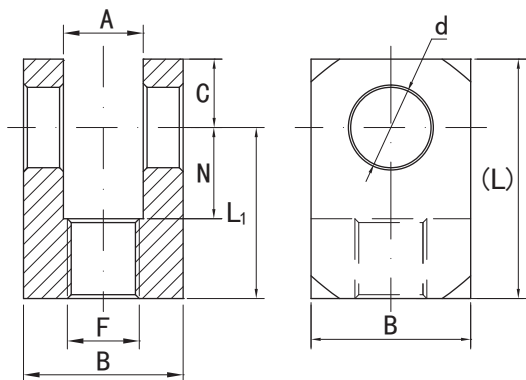
壳体Housing
合金钢Alloy steel

型号 Part No.	尺寸 Dimensions								重量 Weight kg
	ΦA	B	ΦC	D	D ₁	D ₂	ΦE	F	
08/I 164	50	30	20	110	20	70	65	30	0.52
08/I 165	60	35	25	130	25	80	75	35	0.79
08/I 166	70	45	30	160	30	100	90	45	1.57
08/I 167	80	50	35	180	35	110	100	50	2.03
08/I 168	92	55	40	195	40	115	115	55	2.6
08/I 169	95	55	40	195	40	115	115	55	2.4
08/I 170	105	60	45	215	45	125	125	60	3
08/I 171	115	70	50	245	50	145	145	70	5.3
08/I 172	140	80	60	290	60	170	170	80	7.7



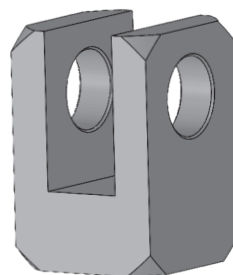
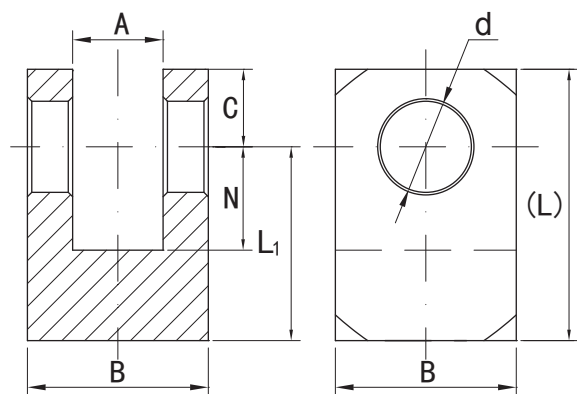
壳体Housing
碳钢Carbon steel

型号 Part No.	尺寸 Dimensions									mm	载荷 Load ratings kN	重量 Weight kg
	CK 9H	CL	CM	CE	LE min.	KK 6H	LF	B	R max			
IF 10	10	24	10	37	18	M10×1.25	19	20	11	5	0.1	
IF 12	12	28	12	38	18	M12×1.25	20	25	16	8	0.16	
IF 16	16	36	16	44	22	M14×1.5	22	30	20	12.5	0.27	
IF 20	20	45	20	52	27	M16×1.5	25	40	25	20	0.53	
IF 25	25	56	25	65	34	M20×1.5	31	50	32	32	1.12	
IF 32	32	70	32	80	42	M27×2	38	65	40	50	2.18	
IF 40	40	90	40	97	52	M33×2	45	80	50	80	4.4	
IF 50	50	110	50	120	64	M42×2	56	100	63	125	7.6	
IF 63	63	140	63	140	75	M48×2	65	120	71	200	17.7	
IF 80	80	170	80	180	94	M64×3	86	150	90	320	30.6	



壳体Housing
碳钢Carbon steel

型号 Part No.	尺寸 Dimensions								mm
	F 6H	A	B	d	L	L ₁	N	C	
FF 1700	M16×1.5	16	35	16.20	55	39	24	16	
FF 1702	M20×1.5	20	40	20.25	65	45	30	20	
FF 1704	M24×2.0	25	50	25.25	70	50	30	20	
FF 1706	M30×2.0	30	60	30.25	90	65	35	25	
FF 1708	M33×2.0	35	70	35.25	105	75	40	30	



壳体 Housing

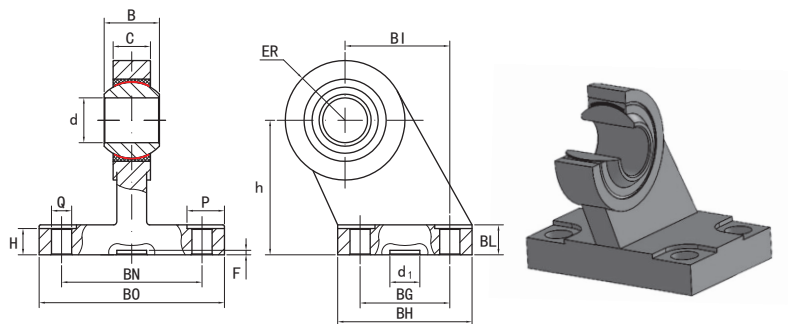
碳钢 Carbon steel

型号 Part No.	尺寸 Dimensions							mm
	A	B	d	L	L ₁	N	C	
FS 1710	16	35	16.2	50	34	24	16	
FS 1712	20	40	20.25	60	40	30	20	
FS 1714	25	50	25.25	65	45	30	20	
FS 1716	30	60	30.25	75	50	35	25	
FS 1720	35	70	35.25	85	55	40	30	

■ 用于液压部件的杆端关节轴承 **KJ..** 系列

KGBAL®

ROD ENDS FOR HYDRAULIC COMPONENTS KJ.. SERIES



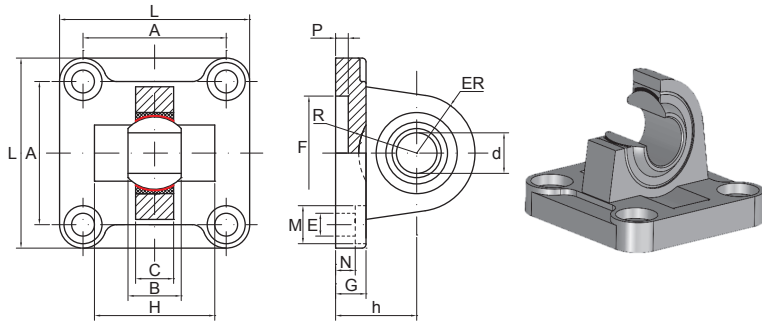
壳体Housing	内圈Inner ring	外圈Outer ring
碳钢Carbon steel 电熔/喷塑Electrofusion/Spray-paint	轴承钢Bearing steel 热处理Heat treated:HRC58-62	黄铜Brass
摩擦副Sliding contact surfaces:		钢/PTFE Steel/PTFE

型号 Part No.	尺寸 Dimensions															重量 Weight kg
	d	h	B	BI	ER	d ₁	F	Q	P	BG	BH	BL	BN	BO	H	
KJ 10	10	32	14	21	15	20	3	6.6	11	18	31	10	38	51	8.5	0.18
KJ 12	12	36	16	24	18	20	3	6.6	11	22	35	10	41	54	8.5	0.27
KJ 16	16	45	21	33	20	20	3	9	15	30	45	12	50	65	10.5	0.46
KJ 16-1	16	50	21	37	23	20	3	9	15	35	50	12	52	67	10.5	0.55
KJ 20	20	63	25	47	27	20	3	11	18	40	60	14	66	86	11.5	0.97
KJ 20-1	20	71	25	55	30	20	3	11	18	50	70	15	76	96	12.5	1.33
KJ 30	30	90	37	70	40	20	3	13.5	20	60	90	20	94	124	17	3

■ 用于液压部件的杆端关节轴承 **KJH.** 系列

KGBAL®

ROD ENDS FOR HYDRAULIC COMPONENTS KJH. SERIES

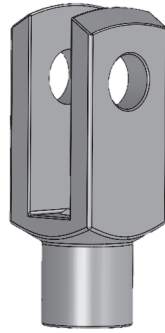
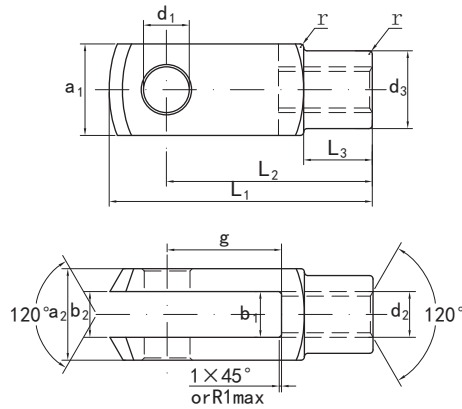


壳体Housing	内圈Inner ring	外圈Outer ring
碳钢Carbon steel 电熔/喷塑Electrofusion/Spray-paint	轴承钢Bearing steel 热处理Heat treated:HRC58-62	黄铜Brass
摩擦副Sliding contact surfaces:		钢/PTFE Steel/PTFE

型号 Part No.	尺寸 Dimensions															重量 Weight kg
	d	h	B	C	ER	A	L	F	P	G	N	M	E	H	R	
KJH 10	10	22	14	10.5	15	32.5	45	30	5	10	5.5	10.5	6.6	/	/	0.15
KJH 12	12	25	16	12	18	38	55	35	5	10	5.5	11	6.6	/	/	0.26
KJH 16	16	27	21	15	20	46.5	65	40	5	10	6.5	15	9	51	19	0.36
KJH 16-1	16	32	21	15	23	56.5	75	45	5	12	6.5	15	9	/	/	0.6
KJH 20	20	36	25	18	27	72	95	45	5	14	10	18	11	70	24	1.12
KJH 20-1	20	41	25	18	30	89	115	55	5	16	10	18	11	/	/	1.79
KJH 30	30	50	37	25	40	110	140	60	7	20	10	20	13.5	/	/	3.5

■ 用于油压缸的U形件 G.. 系列

CLEVISES FOR HYDRAULIC CYLINDERS G.. SERIES



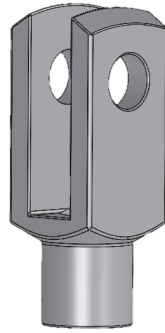
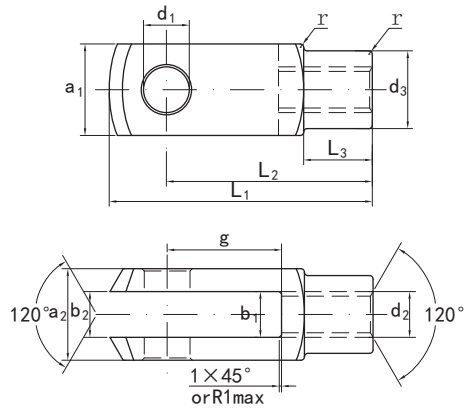
壳体 Housing

碳钢 Carbon steel
镀锌 Zinc plated

型号 Part No.	尺寸 Dimensions													重量 Weight kg
	d ₁ H9	g ±0.5	a ₁	a ₂	b ₁ B ₁₃	b ₂	d ₂ 6H	d ₃ ±0.3	f ±0.2	L ₁ ±0.5	L ₂	L ₃ ±0.3	r ±0.5	
G 4×8	4	8	8	8	4	4 ^{+0.33} / _{+0.15}	M4×0.7	8	0.5	21	16±0.3	6	0.5	0.005
G 4×16	4	16	8	8	4	4 ^{+0.33} / _{+0.15}	M4×0.7	8	0.5	29	24±0.3	6	0.5	0.007
G 5×10	5	10	10	10	5	5 ^{+0.33} / _{+0.15}	M5×0.8	9	0.5	26	20±0.3	7.5	0.5	0.009
G 5×20	5	20	10	10	5	5 ^{+0.33} / _{+0.15}	M5×0.8	9	0.5	36	30±0.3	7.5	0.5	0.013
G 6×12	6	12	12	12	6	6 ^{+0.33} / _{+0.15}	M6×1.0	10	0.5	31	24±0.3	9	0.5	0.015
G 6×24	6	24	12	12	6	6 ^{+0.33} / _{+0.15}	M6×1.0	10	0.5	43	36±0.4	9	0.5	0.021
G 8×16	8	16	16	16	8	8 ^{+0.33} / _{+0.15}	M8×1.25	14	0.5	42	32±0.4	12	0.5	0.037
G 8×16 FG	8	16	16	16	8	8 ^{+0.33} / _{+0.15}	M8×1.0	14	0.5	42	32±0.4	12	0.5	0.037
G 8×32	8	32	16	16	8	8 ^{+0.33} / _{+0.15}	M8×1.25	14	0.5	58	48±0.4	12	0.5	0.054
G 8×32 FG	8	32	16	16	8	8 ^{+0.33} / _{+0.15}	M8×1.0	14	0.5	58	48±0.4	12	0.5	0.054
G 10×20	10	20	20	20	10	10 ^{+0.33} / _{+0.15}	M10×1.5	18	0.5	52	40±0.4	15	0.5	0.074
G 10×20 FG	10	20	20	20	10	10 ^{+0.33} / _{+0.15}	M10×1.25	18	0.5	52	40±0.4	15	0.5	0.074
G 10×40	10	40	20	20	10	10 ^{+0.70} / _{+0.15}	M10×1.5	18	0.5	72	60±0.4	15	0.5	0.116
G 10×40 FG	10	40	20	20	10	10 ^{+0.70} / _{+0.15}	M10×1.25	18	0.5	72	60±0.4	15	0.5	0.116
G 12×24	12	24	24	24	12	12 ^{+0.70} / _{+0.15}	M12×1.75	20	0.5	62	48±0.4	18	0.5	0.121
G 12×24 FG	12	24	24	24	12	12 ^{+0.70} / _{+0.15}	M12×1.25	20	0.5	62	48±0.4	18	0.5	0.121
G 12×48	12	48	24	24	12	12 ^{+0.70} / _{+0.15}	M12×1.75	20	0.5	86	72±0.4	18	0.5	0.175
G 12×48 FG	12	48	24	24	12	12 ^{+0.70} / _{+0.15}	M12×1.25	20	0.5	86	72±0.4	18	0.5	0.175
G 14×28	14	28	27	27	14	14 ^{+0.70} / _{+0.15}	M14×2.0	24	1.0	72	56±0.4	23	1	0.178
G 14×28 FG	14	28	27	27	14	14 ^{+0.70} / _{+0.15}	M14×1.5	24	1.0	72	56±0.4	23	1	0.178
G 14×56	14	56	27	27	14	14 ^{+0.70} / _{+0.15}	M14×2.0	24	1.0	101	85±0.4	23	1	0.258
G 14×56 FG	14	56	27	27	14	14 ^{+0.70} / _{+0.15}	M14×1.5	24	1.0	101	85±0.4	23	1	0.258
G 16×32	16	32	32	32	16	16 ^{+0.70} / _{+0.15}	M16×2.0	26	1.0	83	64±0.4	24	1	0.282
G 16×32 FG	16	32	32	32	16	16 ^{+0.70} / _{+0.15}	M16×1.5	26	1.0	83	64±0.4	24	1	0.282
G 16×64	16	64	32	32	16	16 ^{+0.70} / _{+0.15}	M16×2.0	26	1.0	115	96±0.4	24	1	0.411
G 16×64 FG	16	64	32	32	16	16 ^{+0.70} / _{+0.15}	M16×1.5	26	1.0	115	96±0.4	24	1	0.411
G 18×36	18	36	36	36	18	18 ^{+0.70} / _{+0.15}	M18×2.5	30	1.0	94	72±0.4	27	1.5	0.39
G 18×36 FG	18	36	36	36	18	18 ^{+0.70} / _{+0.15}	M18×1.5	30	1.0	94	72±0.4	27	1.5	0.39
G 20×40	20	40	40	40	20	20 ^{+0.70} / _{+0.15}	M20×2.5	34	1.0	105	80±0.4	30	1.5	0.55
G 20×40 FG	20	40	40	40	20	20 ^{+0.70} / _{+0.15}	M20×1.5	34	1.0	105	80±0.4	30	1.5	0.55
G 20×80	20	80	40	40	20	20 ^{+0.70} / _{+0.15}	M20×2.5	34	1.0	145	120±0.4	30	1.5	0.8
G 20×80 FG	20	80	40	40	20	20 ^{+0.70} / _{+0.15}	M20×1.5	34	1.0	145	120±0.4	30	1.5	0.8
G 25×50	25	50	50	50	25	25 ^{+0.70} / _{+0.15}	M24×3.0	42	1.5	132	100±0.4	36	1.5	1.1

■ 用于油压缸的U形件 G.. 系列

CLEVISES FOR HYDRAULIC CYLINDERS G.. SERIES



壳体 Housing

碳钢 Carbon steel
镀锌 Zinc plated

型号 Part No.	尺寸 Dimensions													重量 Weight kg
	d ₁ H9	g ±0.5	a ₁	a ₂	b ₁ B ₁₃	b ₂	d ₂ 6H	d ₃ ±0.3	f ±0.2	L ₁ ±0.5	L ₂	L ₃ ±0.3	r ±0.5	
G 25×50 FG	25	50	50	50	25	25 ^{+0.70} / _{+0.15}	M24×2.0	42	1.5	132	100±0.4	36	1.5	1.1
G 28×56	28	56	55	55	28	28 ^{+0.70} / _{+0.15}	M27×3.0	48	1.5	148	112±0.4	40	2	1.5
G 28×56 FG	28	56	55	55	28	28 ^{+0.70} / _{+0.15}	M27×2.0	48	1.5	148	112±0.4	40	2	1.5
G 30×54 FG	30	54	55	55	30	30 ^{+0.70} / _{+0.15}	M27×2.0	48	1.5	148	110±0.4	40	2	1.44
G 30×60	30	60	60	60	30	30 ^{+0.70} / _{+0.15}	M30×3.5	52	1.5	160	120±0.4	42	2	1.97
G 30×60 FG	30	60	60	60	30	30 ^{+0.70} / _{+0.15}	M30×2.0	52	1.5	160	120±0.4	42	2	1.97
G 35×54 FG	35	54	70	70	35	35 ^{+0.70} / _{+0.15}	M36×2.0	60	2.0	188	144±0.4	54	3	2.93
G 35×72	35	72	70	70	35	35 ^{+0.70} / _{+0.15}	M36×4.0	60	2.0	188	144±0.4	54	3	2.93
G 35×72 FG	35	72	70	70	35	35 ^{+0.70} / _{+0.15}	M36×2.0	60	2.0	188	144±0.4	54	3	2.93
G 36×72	35	72	70	70	36	36 ^{+0.70} / _{+0.15}	M36×4.0	60	2.0	188	144±0.4	54	3	2.93
G 36×72 FG	35	72	70	70	36	36 ^{+0.70} / _{+0.15}	M36×2.0	60	2.0	188	144±0.4	54	3	2.93
G 40×84 FG	40	84	85	85	40	40 ^{+0.70} / _{+0.15}	M42×2.0	70	3.0	232	168±0.4	63.5	5	5.64
G 42×84	42	84	85	85	42	42 ^{+0.70} / _{+0.15}	M42×4.5	70	3.0	232	168±0.4	63.5	5	5.34
G 42×84 FG	42	84	85	85	42	42 ^{+0.70} / _{+0.15}	M42×2.0	70	3.0	232	168±0.4	63.5	5	5.34
G 50×96	50	96	96	96	50	50 ^{+0.70} / _{+0.15}	M48×5.0	82	3.0	265	192±0.4	73	5	7.86
G 50×96 FG	50	96	96	96	50	50 ^{+0.70} / _{+0.15}	M48×2.0	82	3.0	265	192±0.4	73	5	7.86